

MASON COUNTY BUILDINGS, PLANNING, DRAINS, & AIRPORT COMMITTEE

Meeting will be at the conference room at the Mason County Airport Terminal

January 23, 2024

3:00 PM

A. Roll Call

B. Approval of the Agenda

C. Approval of the Minutes

D. Reading of Correspondence

E. Limited Public Comments

F. Committee Work

- 1. Consideration of the 2024 Revised County Plan**
- 2. Consideration of Remonumentation Surveyor Contracts**
- 3. Consideration of appointments to the Remonumentation Peer Group**
- 4. Consideration of a request to hold the EAA Young Eagles Pancake Fly-in Breakfast at the Mason County Airport Terminal**
- 5. Consideration of Runway 8/26 Rehabilitation and Runway 8 PAPI Replacement Contract**
- 6. Consideration of a request to purchase two Wind Cones**
- 7. Martinaire MMRA Deicing Update**
- 8. Consideration of the purchase of property**

G. Limited Public Comments

H. Any other business

I. Adjournment

Mason County Buildings, Planning, Drains, & Airport Committee Meeting
December 26, 2023

Commissioner Andersen called the Buildings, Planning, Drains & Airport Committee Meeting to order at 4:00 p.m. in the conference room of the Mason County Airport, 5300 W. US Hwy. 10, Ludington, Michigan 49431. Members Present: Andersen and Krieger. Absent: Hull. Others present: Administrator Knizacky, Airport Manager O'Connor, and Clerk Kelly. Member of public: Kevin Hughes, District #10 Health Department and Leslie from ATS.

Motion by Andersen and seconded by Krieger to approve the agenda. Motion carried.

Motion by Krieger and seconded by Andersen to approve the minutes of November 28, 2023. Motion carried.

Correspondence: None.

Limited Public Comments: None.

Consideration of a request to park the Addiction Treatment Services (ATS) mobile unit in the Health Department parking lot: Kevin Hughes, District #10 Health Department Director introduced Leslie from ATS with an explanation of ATS-Addiction Treatment Services mobile services. ATS provides walk-in treatment service for substance abuse users. In addition, they also serve as a referral provider for individuals who need other services that are provided by the Health Department. The request is to park the mobile unit one day per week based on their schedule at the Mason County District #10 Health Department in the parking lot. This project will focus on increasing opportunities for the provision of services targeting substance abuse use disorders. Other Counties within the District #10 are also utilizing this mobile service. Commissioner Krieger noted that he and Commissioner Bacon had seen the initial presentation and felt it was a good idea. Motion by Krieger and seconded by Andersen to allow ATS to park in the District #10 parking on days that will work for their respective schedule. Motion carried.

Consideration of a request to purchase playground equipment: The Parks and Recreation Committee would like to upgrade the playground equipment at the campground. Reviewed was the proposed Waterton (Gumdrop) equipment that is being considered at a cost of \$32,868.54, funds to come from campground proceeds and Consumer's Energy. Motion by Krieger and seconded by Andersen to recommend for approval and send to the full Board the Consideration of a request to purchase playground equipment. Motion carried.

Consideration of a request to have 24/7 access to the Courthouse for five (5) days: Registrar Englebrecht is requesting 24/7 onsite access to the courthouse for a period of up to five days for the scanning project that has been approved. Noted was that this company had previously provided the services regarding scanning back in 2016 with the same structure. Motion by Andersen and seconded by Krieger to allow 24/7 access to complete the scanning project for the Register of Deeds office. Motion carried.

Consideration of the final MDOT/FAA approved Airport Layout Plan (ALP): Airport Manager O'Connor reviewed via power point the final MDOT/FAA Airport layout plan in detail. This project started back in 2018 and multiple considerations were reviewed over the five-years to complete this project. The most significant consideration of this project is that the Airport will be able to maintain the 5003 foot runway for the foreseeable future. Further considerations involved: prevailing winds, aircraft usage, obstruction evaluation, FAA Airfield design standards, along with overlap of safety areas, decoupling of runways, and runway access. Discussion ensued regarding the above issues with significant importance placed on the ability of the airport to be able to maintain the 5003 foot runway. Motion by Krieger and seconded by Andersen to send to the full Board the Consideration of the Final MDOT/FAA approved Airport Layout Plan. Motion carried.

Consideration of proposals for the architect services for the courthouse project: Committee members reviewed the two RFP's submitted for the services for the courthouse project proposed by Judge Nellis to create a new courtroom for use at the Courthouse. Committee members reviewed WTA Architects proposal for \$91,025.00 and Post Associates proposal for \$30,750.00. Discussion ensued with the consideration of Post Associates RFP. Motion by Krieger and seconded by Andersen to recommend for Consideration the Post Associates proposal for \$30,750.00 for architect services for the courthouse project to the full Board. Motion carried.

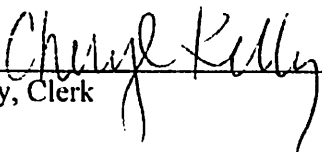
Consideration of a proposal to extend the mowing contract: Administrator Knizacky noted that the previous lawn mowing contract had the ability to be extended. Larson's Landscaping would be willing to extend the contract at the 2023 rates for 2024. Motion by Krieger and seconded by Anderson to send the Consideration of a proposal to extend the mowing contract to the full Board with the recommendation to accept. Motion carried.

Consideration of a request for door access to the Mason County Courthouse: Administrator Knizacky noted that Prosecutor Kreinbrink was contacted via email regarding access to offices, and noted that the Prosecutor had no objection with providing Trooper Demny with access to the building nor her office. Prior approval was already given by the Magistrate to access only the front cubicle area shared with the Circuit Court office. Access requested will be to the courthouse east and west entrances; Prosecutor's office, and District Court cubicle area only. Motion by Krieger and seconded by Andersen to allow the request for Trooper Demny to access the specific court offices within the courthouse and not allow the transfer of the keycard to another individual. Motion carried.

Limited Public Comment: None.

Any other business: None.

The meeting was adjourned at 4:45 p.m.



Cheryl Kelly, Clerk

2023 REVISED COUNTY PLAN

Monumentation & Remonumentation Plan

For **MASON** County, Michigan

Prepared for the implementation of 1990 PA 345 as amended, MCL 54.261-279

Revised and Approved by the Mason County Board of Commissioners:

Janet Andersen, Chairperson

Date

TABLE OF CONTENTS

Section	Topic	Page Number
	Title Page	1
	Table of Contents	2
I	Introduction – The Reason for this Revision	3
AA	Specific Remonumentation Plan	4 - 22
BB	Perpetual Monument Maintenance Plan	23
CC	Peer Review Group	24
DD	Geodetic Coordinates	25
EE	Agreements for Active Geodetic Control Sites	26
FF	County Revisions to the Remonumentation Plan	27

INTRODUCTION – THE REASON FOR THIS REVISION

The State Survey and Remonumentation Act, 1990 PA 345, was revised on June 12, 2014 by 2014 PA 166. This revision, among other things, reinstated the State Survey and Remonumentation Commission and required them in Section 8 to promulgate the rules and guide the counties to formalize a REVISED COUNTY PLAN. Issues identified in the law and by the commission to be specifically addressed are:

- A. A plan to remonument all of the original Public Land Survey corners, property controlling corners and protracted corners. The plan must also list other corners to be included or excluded. MCL 54.268 (2)(a)&(c). If an explicit plan is included in a previous Plan, then outline any modifications that may have occurred since the last update.
- B. A perpetual monument maintenance plan. MCL 54.268 (2)(d) The Land Corner Recordation Act, 1970 PA 74, outlines when a Land Corner Recordation Certificate must be filed. In order to formalize the local practice, the county must define “as described.”
- C. A peer review group. MCL 54.268 (e)
 - i. Qualifications for peer review group membership must be defined.
 - ii. Safeguards can be defined to avoid one-company rule.
 - iii. Allowance of walk-in corner review must be identified.
- D. Geodetic coordinates to be collected. MCL 54.268 (2)(a)(iii)
 - i. Geodetic coordinates are not defined by the law. Some counties want to use State Plane Coordinates as defined in 1964 PA 9, and others want to use latitude and longitude. The county can decide which to use, but it must be consistent and documented.
 - ii. The storage of coordinate values must be addressed at the county level.
- E. Agreements for active geodetic control sites. MCL 54.268 (7)
- F. LCRC forms must be recorded at the county Register of Deeds and with the Department. MCL 54.268 (2)(b). This has not changed.
- G. The corners for each individual township have the listing of corners to be remonumented refined to exclude those corners that were not set by the GLO surveyor due to bodies of water and those corners that are entirely within forest service properties and have no impact on private holdings.
- H. The corners set by GLO that are now within the Consumers Power Pumped Storage Reservoir in T17N R18W & T18N R18W will have reference monuments set during the maintenance phase.

It is the intent of the Revision to review the Remonumentation Plan, assess its validity and modify for recent technologies. As shown in the outline, decisions must be made and formalized in the Revised County Plan to assure local control and consistency. Additions to this Revision can be made if a county would like to modify a section.

According to Section 8 (1), the deadline to file the Revised County Plan is March 1, 2024.

Appendix AA
Detailed County Remonumentation Plan

The Remonumentation Plan for Mason County shall include the following corners:

- ALL corners monumented or protracted by the General Land Office (GLO) between the years 1835-1839 and the protracted center of sections in Mason County, with the exception of GLO and protracted Corners that have no impact on private properties boundaries as they are located entirely within the National Forest.
 - Section and One-Quarter Corners indexed in a standard township as:
 - A01, A02, A03, A04, A05, A06, A07, A08, A09, A10, A11, A12, A13
 - B03, B05, B07, B09, B11, B13
 - C01, C02, C03, C04, C05, C06, C07, C08, C09, C10, C11, C12, C13
 - D03, D05, D07, D09, D11, D13
 - E01, E02, E03, E04, E05, E06, E07, E08, E09, E10, E11, E12, E13
 - F03, F05, F07, F09, F11, F13
 - G01, G02, G03, G04, G05, G06, G07, G08, G09, G10, G11, G12, G13
 - H03, H05, H07, H09, H11, H13
 - I01, I02, I03, I04, I05, I06, I07, I08, I09, I10, I11, I12, I13
 - J03, J05, J07, J09, J11, J13
 - K01, K02, K03, K04, K05, K06, K07, K08, K09, K10, K11, K12, K13
 - L03, L05, L07, L09, L11, L13
 - M01, M02, M03, M04, M05, M06, M07, M08, M09, M10, M11, M12, M13
 - Meander Corners for respective townships and indexed as:
 - T17N-R15W = None
 - T17N-R16W = 001 thru 008
 - T17N-R17W = 001 thru 010
 - T17N-R18W = 001 thru 016
 - T18N-R15W = 001 thru 011
 - T18N-R16W = 001 thru 012
 - T18N-R17W = 001 thru 023
 - T18N-R18W = 001 thru 028
 - T19N-R15W = 001 thru 021
 - T19N-R16W = 001 thru 002
 - T19N-R17W = 001 thru 002
 - T19N-R18W = 001 thru 028
 - T20N-R15W = 001 thru 002
 - T20N-R16W = 001 thru 005
 - T20N-R17W = 001 thru 004
 - T20N-R18W = 001 thru 011

- Protracted One-Quarter Corners for respective townships and indexed as:
 - T17N-R15W = B01, D01, F01, H01, J01, L01
 - T17N-R16W = B01, D01, F01, H01, J01, L01
 - T17N-R17W = B01, D01, F01, H01, J01, L01
 - T17N-R18W = J01, L01
 - T18N-R15W = B01, D01, F01, H01, J01, L01
 - T18N-R16W = B01, D01, F01, H01, J01, L01
 - T18N-R17W = B01, D01, F01, H01, J01, L01
 - T18N-R18W = F01, H01, J01, L01
 - T19N-R15W = B01, D01, F01, H01, J01, L01
 - T19N-R16W = B01, D01, F01, H01, J01, L01
 - T19N-R17W = B01, D01, F01, H01, J01, L01
 - T19N-R18W = D01, F01, H01, J01, L01
 - T20N-R15W = B01, D01, F01, H01, J01, L01
 - T20N-R16W = B01, D01, F01, H01, J01, L01
 - T20N-R17W = B01, D01, F01, H01, J01, L01

- Protracted Center One-Quarter Corners for respective township and indexed as:
 - T17N-R15W = B04, B10, D06, D12, F06, F08, F10, F12, H03, H04, H06, H08, H10, H12, J02, J04, J06, J08, J10, J12, L02, L04, L06, L08, L10, L12.
 - T17N-R16W = B02, B04, B06, B08, B10, B12, D02, D04, D06, D08, D10, D12, F02, F04, F06, F08, F10, F12, H02, H04, H06, H08, H10, H12, J02, J04, J06, J08, J10, J12, L02, L04, L06, L08.
 - T17N-R17W = B02, B04, B06, B08, B10, B12, D02, D04, D06, D08, D10, D12, F02, F04, F06, F08, F10, F12, H02, H04, H06, H08, H10, H12, J02, J04, J06, J08, J10, J12, L02, L04, L06, L08, L10, L12.
 - T17N-R18W = J06, J08, J10, J12, L02, L04, L08, L10.
 - T18N-R15W = B02, B04, B06, B08, B10, D02, D04, D06, D08, D10, F02, F04, F06, F08, F10, H02, H04, H06, H08, H10, H12, J02, J04, J06, J08, J10, J12, L02, L04, L06, L08, L10, L12.
 - T18N-R16W = B02, B04, B06, B08, B10, B12, D02, D04, D06, D08, D10, D12, F02, F04, F06, F08, F10, F12, H02, H04, H06, H08, H10, H12, J02, J04, J06, J08, J10, J12, L02, L04, L06, L08, L10, L12.
 - T18N-R17W = B02, B04, B06, B08, D02, D04, D06, D08, D10, D12, F02, F04, F06, F08, F10, F12, H04, H06, H10, J02, J04, J06, J08, J12, L02, L04, L06, L08, L10, L12.
 - T18N-R18W = F02, H02, H04, H06, H10, J02, J04, J06, J08, J10, J12, L02, L04, L06, L08, L12.
 - T19N-R15W = B02, B04, B06, B08, B10, B12, D02, D04, D06, D08, D10, D12, F02, F04, F06, F08, H02, H04, H06, H08, H10, H12, J02, J04, J06, J08, J10, J12, L04, L06, L08, L10, L12.

- T19N-R16W = B02, B04, B06, B08, B10, B12, D02, D04, D06, D08, D10, D12, F02, F04, F06, F08, F10, F12, H02, H04, H06, H08, H10, H12, J02, J04, J06, J08, J10, J12, L02, L04, L06, L08, L10, L12.
- T19N-R17W = B04, B06, B08, B10, B12, D02, D04, D06, D08, D10, D12, F02, F04, F06, F08, F10, F12, H02, H04, H06, H08, H10, H12, J02, J04, J06, J08, J10, J12, L02, L04, L06, L08, L10, L12.
- T19N-R18W = D10, F02, F12, H04, H06, H08, H10, H12, J04, J06, J08, J10, J12, L04, L06, L08, L10, L12.
- T20N-R15W = B02, B04, B06, B08, B10, B12, D02, D04, D06, D08, D10, D12, F02, F04, F06, F08, F10, F12, H02, H04, H06, H08, H10, H12, J02, J04, J08, J10, J12, L02, L04, L08, L10.
-

THIS COUNTY SHOULD HAVE 2069 CORNER RECORDS ON FILE PRIOR TO COMMENCING THE PERPETUAL MONUMENT MAINTENANCE PLAN

T17N-R15W

ALL corners monumented by the General Land Office between the years 1835-1839

- Section and One-Quarter Corners indexed as:
 - A01, A02, A03, A04, A05, A06, A07, A08, A09, A10, A11, A12, A13
 - B01, B03, B05, B07, B09, B11, B04, B10,
 - C01, C02, C03, C04, C05, C06, C07, C08, C09, C10, C11, C12, C13
 - D01, D03, D05, D07, ~~D09~~, D11, D13
 - E01, ~~E02~~, E03, E04, E05, E06, E07, E08, E09, E10, E11, E12, E13
 - F01, F03, F05, F07, F09, F11, F13
 - G01, G02, G03, G04, G05, G06, G07, G08, G09, G10, G11, G12, G13
 - H01, H03, H05, H07, H09, H11, H13
 - I01, I02, I03, I04, I05, I06, I07, I08, I09, I10, I11, I12, I13
 - J01, J03, J05, J07, J09, J11, J13
 - K01, K02, K03, K04, K05, K06, K07, K08, K09, K10, K11, K12, K13
 - L01, L03, L05, L07, L09, L11, L13
 - M01, M02, M03, M04, M05, M06, M07, M08, M09, M10, M11, M12, M13
- Meander Corners indexed as:
 - None
 - NOTE A LIST CORNERS in T17N;R15W ARE ALSO THE M CORNERS IN T17N; R16W AND ARE NOT LISTED IN TOTALS FOR THIS TWP
 - Corners still to do
 - All protracted Center of Section Corners listed below:
 - B04, B10, D06, D12, F06, F08, F10, F12, H02, H04, H06, H08, H10, H12, J02, J04, J06, J08, J10, J12, L02, L04, L06, L08, L10, L12.
 - Corners not to do as they are located entirely within Federal Forest
 - B02, D02, F02, D04, B06, B08, D08, D10, B12, E02, D09
- 2023 Perpetual Monument Maintenance Corners
 - A03, A04, A05, B03, B05, C03, C04, C05, E05, E06, E07, F05, F06, G05, G06, G07,
 - K03, K04, K05, L03, L05, M03, M04, M05.

THIS TOWNSHIP SHOULD HAVE 144 CORNER RECORDS ON FILE PRIOR TO COMPLETION OF THE PERPETUAL MONUMENT MAINTENANCE PLAN

T17N-R16W

ALL corners monumented by the General Land Office between the years 1835-1839

- Section and One-Quarter Corners indexed as:
 - A01, A02, A03, A04, A05, A06, A07, A08, A09, A10, A11, A12, A13
B01, B03, B05, B07, B09, B11, B13
C01, C02, C03, C04, C05, C06, C07, C08, C09, C10, C11, C12, C13
D01, D03, D05, D09, D11, D13
E01, E02, E03, E04; E05, E06, E07, E08, E09, E10, E11, E12, E13
F01, F03, F07, F09, F11, F13
G01, G02, G03, G04, G05, G06, G07, G08, G09, G10, G11, G12, G13
H01, H03, H05, H07, H09, H11, H13
I01, I02, I03, I04, I05, I06, I07, I08, I09, I10, I11, I12, I13
J01, J05, J07, J09, J11, J13
K01, K02, K03, K04, K05, K06, K07, K08, K09, K10, K11, K12, K13
L01, L03, L05, L07, L09, L11, L13
M01, M02, M03, M04, M05, M06, M07, M08, M09, M10, M11, M12, M13
- Meander Corners indexed as:
 - 001, 002, 003, 004, 005, 006, 007, 008
 - NOTE A LIST CORNERS in T17N'R16W ARE ALSO THE M LIST CORNERS IN T17N; R17W AND ARE NOT LISTED IN TOTALS FOR THIS TWP
 - Corners still to do All protracted Center of Section Corners as indexed below:
 - B02, B04, B06, B08,
 - B10, B12, D02, D04, D06, D08, D10, D12, F02, F04, F06, F08, F10, F12, H02, H04, H06, H08, H10, H12, J02, J04, J06, J08, L02, L04, L06, L08.
 - Corners not to do as they are located entirely within National Forest
 - J10, J11, J12
 - 2023 Perpetual Monumentation Corners
 - A05;A06;A07;A08.B05;B07;C05;C06;C07;C08;D05;D07;E05;E06;E07;F07;G05;G06;G07;G08;H07;I07;I08;K07;K08;L07; M07; M08:M10.

THIS TOWNSHIP SHOULD HAVE 158 CORNER RECORDS ON FILE PRIOR TO COMPLETION OF THE PERPETUAL MONUMENT MAINTENANCE PLAN

T17N-R17W

ALL corners monumented by the General Land Office between the years 1835-1839

- Section and One-Quarter Corners indexed as:
 - A01, A02, A03, A04, A05, A06, A07, A08, A09, A10, A11, A12, A13
 - B01, B03, B05, B07, B09, B11, B13
 - C01, C02, C03, C04, C05, C06, C07, C08, C09, C10, C11, C12, C13
 - D01, D03, D05, D07, D09, D11, D13
 - E01, E02, E03, E04, E05, E06, E07, E08, E09, E10, E11, E12, E13
 - F01, F03, F05, F07, F09, F11, F13
 - G01, G02, G03, G04, G05, G06, G07, G08, G09, G10, G11, G12, G13
 - H01, H03, H05, H07, H09, H11, H13
 - I01, I02, I03, I04, I05, I06, I07, I08, I11, I12, I13
 - J01, J03, J05, J07, J09, J11, J13
 - K01, K02, K03, K04, K05, K06, K07, K08, K09, K11, K12, K13
 - L01, L03, L05, L07, L09, L11, L13
 - M01, M02, M03, M04, M05, M06, M07, M08, M09, M10, M11, M12, M13
- Meander Corners indexed as:
 - 001, 002, 003, 004, 005, 006, 007, 008, 009, 010
- Corners Still to do: All protracted Center of Section Corners listed below:
 - B02, B04, B06, B08, B10, B12, D02, D04, D06, D08, D10, D12, F02, F04, F06, F08, F10, F12, H02, H04, H06, H08, H10, H12, J02, J04, J06, J08, L02, L04, L06, L08.
- NOTE A LIST CORNERS in T17N'R17W ARE ALSO THE M LIST CORNERS IN T17N; R18W AND ARE NOT LISTED IN TOTALS FOR THIS TWP

THIS TOWNSHIP SHOULD HAVE 199 CORNER RECORDS ON FILE PRIOR TO COMPLETION OF THE PERPETUAL MONUMENT MAINTENANCE PLAN

T17N-R18W

ALL corners monumented by the General Land Office between the years 1835-1839

- Section and One-Quarter Corners indexed as:
 - I01, I02, I03, I04, I05, I06
 - J01, J03 J05, J07, J09, J11, J13
 - K01, K02, K03, K04, K05, K06, K07, K08, K09, K12, K13
 - L01, L05, L07, L09, L13
 - M01, M02, M03, M04, M05, M06, M07, M08, M09, M10, M11, M12, M13
- Meander Corners indexed as:
 - 001, 002, 003, 004, 005, 006, 007, 008, 009, 010, 011, 012, 013, 014, 015, 016
- Corners still to do, All protracted Center of Section Corners listed below:
 - L02, I04, J06, L04 I06, K06, L06, J08, L08, J10, L10, J12.
- Corners monumented but not set by GLO K-11

THIS TOWNSHIP SHOULD HAVE 68 CORNER RECORDS ON FILE PRIOR TO COMPLETION OF THE PERPETUAL MONUMENT MAINTENANCE PLAN

T18N-R15W

ALL corners monumented by the General Land Office between the years 1835-1839

- Section and One-Quarter Corners indexed as:
 - A01, A02, A03, A04, A05, A06, A07, A08, A09, A10, A11, A12, A13
 - B01, B03, B05, B07, B09, B11, B13
 - C01, C02, C03, C04, C05, C06, C07, C08, C09, C10, C11, ~~C12~~, C13
 - D01, D03, D05, D07, D09, D11, D13
 - E01, E02, E03, E04, E05, E06, E07, E08, E09, E10, E11, ~~E12~~, E13
 - F03, F05, F07, F09, F11, F13
 - G02, G03, G04, G05, G06, G07, G08, G09, G10, G11, G12, G13
 - H01, H03, H05, H07, H09, H11, H13
 - I01, I02, I04, I05, I06, I07, I08, I09, I10, I11, I12, I13
 - J01, J03, J05, J07, J09, J11, J13
 - K01, K02, K03, K04, K05, K06, K07, K08, K09, K10, K11, K12, K13
 - L01, L03, L05, L07, L09, L11, L13
 - M01, M02, M03, M04, M05, M06, M07, M08, M09, M10, M11, M12, M13
- Corners Still to do: All protracted Center of Section Corners listed below:
 - B02, B04, B06, B08, B10, D02, D04, D06, D08, D10, F02, F04, F06, F08, F10, H02, H04, H06, H08, H10, H12, J02, J04, J06, J08, J10, J12, L02, L04, L06, L08, L10, L12
 - NOTE A LIST CORNERS in T18N; R15W ARE ALSO THE M LIST CORNERS IN T18N; R16W AND ARE NOT LISTED IN TOTALS FOR THIS TWP
- Corners not to be done as they are entirely within the Federal Forest
B12, C12, D12, E12, F12
- Meander Corners indexed as:
 - 001, 002, 003, 004, 005, 006, 007, 008, 009, 010, 011

THIS TOWNSHIP SHOULD HAVE 159 CORNER RECORDS ON FILE PRIOR TO COMPLETION OF THE PERPETUAL MONUMENT MAINTENANCE PLAN

T18N-R16W

ALL corners monumented by the General Land Office between the years 1835-1839

- Section and One-Quarter Corners indexed as:
 - A01, A02, A03, A04, A05, A06, A07, A08, A09, A10, A11, A12, A13
 - B01, B03, B05, B07, B09, B11, B13
 - C01, C02, C03, C04, C05, C06, C07, C08, C09, C10, C11, C12, C13
 - D01, D03, D05, D07, D09, D11, D13
 - E01, E02, E03, E04, E05, E06, E07, E08, E09, E10, E11, E12, E13
 - F01, F03, F05, F07, F09, F11, F13
 - G01, G02, G03, G04, G05, G06, G07, G08, G09, G10, G11, G12, G13
 - H01, H03, H05, H07, H09, H11, H13
 - I01, I02, I03, I04, I05, I06, I07, I08, I09, I10, I11, I12, I13
 - J01, J03, J05, J07, J09, J11, J13
 - K01, K02, K03, K04, K05, K06, K07, K08, K09, K10, K11, K12, K13
 - L01, L03, L05, L07, L09, L11, L13
 - M01, M02, M03, M04, M05, M06, M07, M08, M09, M10, M11, M12, M13
- Corners still to do All protracted Center of Section Corners listed below:
 - B02, B04, B06, B08, B10, B12, D02, D04, D06, D08, D10, D12, F02, F04, F06, F08, F10, F12, H02, H04, H06, H08, H10, H12, J02, J04, J06, J08, J10, J12, L02, L04, L06, L08, L10, L12
 - NOTE A LIST CORNERS in T18N'R16W ARE ALSO THE M LIST CORNERS IN T18N; R17W AND ARE NOT LISTED IN TOTALS FOR THIS TWP

THIS TOWNSHIP SHOULD HAVE 156 CORNER RECORDS ON FILE PRIOR TO COMPLETION OF THE PERPETUAL MONUMENT MAINTENANCE PLAN

T18N-R17W

ALL corners monumented by the General Land Office between the years 1835-1839

- Section and One-Quarter Corners indexed as:
 - A01, A02, A03, A04, A05, A06, A07, A08, A09, ~~A10~~, A11, A12, A13
 - B01, B03, B05, B07, B09, B11, B13
 - C01, C02, C03, C04, C05, C06, C07, C08, C09, C10, ~~C11~~, C12, C13
 - D01, D03, D05, D07, D09, ~~D11~~, D13
 - E01, E02, E03, E04, E05, E06, E07, E08, E09, E10, E11, E12, E13
 - F01, F03, F05, F07, F09, ~~F11~~, F13
 - G01, G02, G03, G04, G05, G06, G07, G08, G09, G10, ~~G11~~, ~~G12~~, G13
 - H01, H03, H05, H07, H09, ~~H11~~, H13
 - I01, I02, I03, I04, I05, I06, I07, I08, I09, I10, ~~I11~~, ~~I12~~, I13
 - J01, J03, J05, J07, J09, ~~J11~~, J13
 - K01, K02, K03, K04, K05, K06, K07, K08, ~~K09~~, K10, K11, K12, K13
 - L01, L03, L05, L07, ~~L09~~, L11, L13
 - M01, M02, M03, M04, M05, M06, M07, M08, M09, M10, M11, M12, M13
- Meander Corners indexed as:
 - 001, 002, 003, 004, 005, 006, 007, 008, 009, 010, 011, 012, 013, 014, 015, 016, 017, 018, 019, 020, 021, 022, 023, 024, 025, 026
- Corners Still to do All protracted Center of Section Corners listed below:
 - B02, B04, B06, B08, D02, D04, D06, D08, D10, D12, F02, F04, F06, F08, F10, F12, H04, H06, H08, H10, J02, J04, J06, J08, J12, L02, L04, L06, L08, L10, L12
 - NOTE A LIST CORNERS in T18N'R17W ARE ALSO THE M LIST CORNERS IN T18N; R18W AND ARE NOT LISTED IN TOTALS FOR THIS TWP.
 - Corners with lines crossed through were not set by GLO

THIS TOWNSHIP SHOULD HAVE 165 CORNER RECORDS ON FILE PRIOR TO COMPLETION OF THE PERPETUAL MONUMENT MAINTENANCE PLAN

RT18N-R18W

ALL corners monumented by the General Land Office between the years 1835-1839

- Section and One-Quarter Corners indexed as:
 - F01
 - G01, G02, ~~G03~~, G04, G05
 -
 - H01, ~~H03~~, H05, H07, ~~H09~~, H11, H13
 - I01, I02, I03, I04, I05, I06, I07, I08, ~~I09~~, I10, I11, I12, I13
 - J01, J03, J05, ~~J07~~, ~~J09~~, J11, J13
 - K01, K02, K03, K04, K05, K06, K07, K08, ~~K09~~, K10, K11, K12, K13
 - L01, L03, L05, L07, ~~L09~~, L11, L13
 - M01, M02, M03, M04, M05, M06, M07, M08, M09, ~~M10~~, M11, M12, M13
- Meander Corners indexed as
 - 001, 002, 003, 004, 005, 006, 007, 008, 009, 010, 011, 012, 013, 014, 015, 016, 017, 018, 019, 020, 021, 022, 023, 024, 025, 026, 027, 028
- Corners still to do: All protracted Center of Section Corners listed below:
 - F02, H02, H04, H06, H10, H12, J02, J04, J04, J08, J10, J12, J13, L02, L04, L06, L08, L12.
 - Corners with lines through them were not set by GLO

THIS TOWNSHIP SHOULD HAVE 103 CORNER RECORDS ON FILE PRIOR TO COMPLETION OF THE PERPETUAL MONUMENT MAINTENANCE PLAN

T19N-R15W

ALL corners monumented by the General Land Office between the years 1835-1839

- Section and One-Quarter Corners indexed as:
 - A01, A02, A03, A04, A05, A06, A07, A08, A09, A10, A11, A12, A13
 - B01, B03, B05, B07, B09, B11, B13
 - C01, ~~C02~~, C03, C04, C05, C06, C07, C08, C09, C10, C11, C12, C13
 - D01, D03, D05, D07, D09, D11, D13
 - E01, E02, ~~E03~~, E04, ~~E05~~, E06, E07, E08, E09, E10, ~~E11~~, E12, E13
 - F01, F03, F05, F07, F09, ~~F11~~, ~~F13~~
 - G01, G02, G03, G04, G05, G06, G07, G08, G09, G10, G11, G12, ~~G13~~
 - H01, H03, H05, H07, H09, H11, H13
 - I01, I02, I03, I04, I05, I06, I07, I08, I09, I10, I11, I12, I13
 - J01, J03, J05, J07, J09, J11, J13
 - K01, K02, K03, K04, K05, K06, K07, K08, K09, K10, K11, K12, K13
 - L01, L03, L05, L07, L09, L11, L13
 - M01, M02, M03, M04, M05, M06, M07, M08, M09, M10, M11, M12, M13
- Meander Corners indexed as
 - 001, 002, 003, 004, 005, 006, 007, 008, 009, 010, 011, 012, 013, 014, 015, 016, 017, 018, 019, 020, 021
- Corners still to do: All protracted Center of Section Corners listed below:
 - B02, B04, B06, B08, B10, B12, D02, D04, D06, D08, D10, D12, F02, F04, F06, F08, H02, H04, H06, H08, H10, H12, J02, J04, J06, J08, J10, J12, L04, L06, L08, L10, L12.
 - Corners with lines through them were not set by GLO
 - NOTE A LIST CORNERS in T19N'R15W ARE ALSO THE M LIST CORNERS IN T19N; R16W AND ARE NOT LISTED IN TOTALS FOR THIS TWP.

THIS TOWNSHIP SHOULD HAVE 180 CORNER RECORDS ON FILE PRIOR TO COMPLETION OF THE PERPETUAL MONUMENT MAINTENANCE PLAN

T19N-R16W

ALL corners monumented by the General Land Office between the years 1835-1839

- Section and One-Quarter Corners indexed as:
 - A01, A02, A03, A04, A05, A06, A07, A08, A09, A10, A11, A12, A13
 - B01, B03, B05, B07, B09, B11, B13
 - C01, C02, C03, C04, C05, C06, C07, C08, C09, C10, C11, C12, C13
 - D01, D03, D05, D07, D09, D11, D13
 - E01, E02, E03, E04, E05, E06, E07, E08, E09, E10, E11, E12, E13
 - F01, F03, F05, F07, F09, F11, F13
 - G01, G02, G03, G04, G05, G06, G07, G08, G09, G10, G11, G12, G13
 - H01, H03, H05, H07, H09, H11, H13
 - I01, I02, I03, I04, I05, I06, I07, I08, I09, I10, I11, I12, I13
 - J01, J03, J05, J07, J09, J11, J13
 - K01, K02, K03, K04, K05, K06, K07, K08, K09, K10, K11, K12, K13
 - L01, L03, L05, L07, L09, L11, L13
 - M01, M02, M03, M04, M05, M06, M07, M08, M09, M10, M11, M12, M13
- Meander Corners indexed as
 - 001, 002
- Corners still to do: All protracted Center of Section Corners listed below:
 - B02, B04, B06, B08, B10, B12, D02, D04, D06, D08, D10, D12, F02, F04, F06, F08, F10, F12, H02, H04, H06, H08, H10, H12, J02, J04, J06, J08, J10, J12, L02, L04, L06, L08, L10, L12.
 - NOTE A LIST CORNERS in T19N'R16W ARE ALSO THE M LIST CORNERS IN T19N; R17W AND ARE NOT LISTED IN TOTALS FOR THIS TWP.

THIS TOWNSHIP SHOULD HAVE 158 CORNER RECORDS ON FILE PRIOR TO COMPLETION OF THE PERPETUAL MONUMENT MAINTENANCE PLAN

T19N-R17W

ALL corners monumented by the General Land Office between the years 1835-1839

- Section and One-Quarter Corners indexed as:
 - A01, A02, A03, A04, A05, A06, A07, A08, A09, A10, A11, A12, A13
 - B01, B03, B05, B07, B09, B11, B13
 - C01, C02, C03, C04, C05, C06, C07, C08, C09, C10, C11, C12, C13
 - D01, D03, D05, D07, D09, D11, D13
 - E01, E02, E03, E04, E05, E06, E07, E08, E09, E10, E11, E12, E13
 - F01, F03, F05, F07, F09, F11, F13
 - G01, G02, G03, G04, G05, G06, G07, G08, G09, G10, G11, G12, G13
 - H01, H03, H05, H07, H09, H11, H13
 - I01, I02, I03, I04, I05, I06, I07, I08, I09, I10, I11, I12, I13
 - J01, J03, J05, J07, J09, J11, J13
 - K01, K02, K03, K04, K05, K06, K07, K08, K09, K10, K11, K12, K13
 - L01, L03, L05, L07, L09, L11, L13
 - M01, M02, M03, M04, M05, M06, M07, M08, M09, M10, M11, M12, M13
- Meander Corners indexed as
 - 001, 002
- Corners still to do: All protracted Center of Section Corners listed below:
 - B04, B06, B08, B10, B12, D02, D04, D06, D08, D10, D12, F02, F04, F06, F08, F10, F12, H02, H04, H06, H08, H10, H12, J02, J04, J06, J08, J10, J12, L02, L04, L06, L08, L10, L12.
 - NOTE A LIST CORNERS in T19N;R17W ARE ALSO THE M LIST CORNERS IN T19N; R18W AND ARE NOT LISTED IN TOTALS FOR THIS TWP.

THIS TOWNSHIP SHOULD HAVE 157 CORNER RECORDS ON FILE PRIOR TO COMPLETION OF THE PERPETUAL MONUMENT MAINTENANCE PLAN

T19N-R18W

ALL corners monumented by the General Land Office between the years 1835-1839

- Section and One-Quarter Corners indexed as:
 - ~~B03, B04, B05, B06, B07~~
 - ~~C02, C03, C04, C05, C06, C07, C08, C09~~
 - ~~D01, D02, D03, D04, D05, D06, D07, D08, D09,~~
 - E01, ~~E02, E03,~~ E08, E09, E10, E11, E12,
 - F01, F11, F13
 - G01, G02, G11, G12, G13
 - H01, H03, H05, H07, H09, H11, H13
 - I01, I03, I04, I05, I06, I07, I08, I09, I10, I11, I12, I13
 - J01, J03, J05, J07, J09, J11, J13
 - K01, K03, K04, K05, K06, K07, K08, K09, K10, K11, K12, K13
 - L01, L03, L05, L07, L09, L11, L13
 - M01, M02, M03, M04, M05, M06, M07, M08, M09, M10, M11, M12, M13
- Meander Corners indexed as
 - 001, 002, 003, 004, 005, 006, 007, 008, 009, 010, 011, 012, 013, 014, 015, 016, 017, 018, 019, 020, 021, 022, 023, 024, 025, 026, 027, 028
- Corners still to do: All protracted Center of Section Corners listed below:
 - D10, E08, E10, E12, F02, F12, H04, H06, H08, H10, H12, J04, J06, J08, J10, J12, L04, L06, L08, L10, L12.
 - Corners with lines through them are corners that are wholly within Federal or State lands and have no impact on private holdings

THIS TOWNSHIP SHOULD HAVE 124 CORNER RECORDS ON FILE PRIOR TO COMPLETION OF THE PERPETUAL MONUMENT MAINTENANCE PLAN

T20N-R15W

ALL corners monumented by the General Land Office between the years 1835-1839

- Section and One-Quarter Corners indexed as:
 - A01, A02, A03, A04, A05, A06, A07, A08, A09, A10, A11, A12, A13
 - B01, B03, B05, B07, B09, B11, B13
 - C01, C02, C03, C04, C05, C06, C07, C08, C09, C10, C11, C12, C13
 - D01, D03, D05, D07, D09, D11, D13
 - E01, E02, E03, E04, E05, E06, E07, E08, E09, E10, E11, E12, E13
 - F01, F03, F05, F07, F09, F11, F13
 - G01, G02, G03, G04, G05, G06, G07, G08, G09, G10, G11, G12, G13
 - H01, H03, H05, H07, H09, H11, H13
 - I01, I02, I03, I04, I05, I06, I07, I08, I09, I10, I11, I12, I13
 - J01, J03, J05, J07, J09, J11, J13
 - K01, K02, K03, K04, K05, K06, K07, K08, K09, K10, K11, K12, K13
 - L01, L03, L05, L07, L09, L11, L13
 - M01, M02, M03, M04, M05, M06, M07, M08, M09, M10, M11, M12, M13
- Meander Corners indexed as
 - 001, 002
- Corners still to do: All protracted Center of Section Corners listed below:
 - Center Section corners indexed as:
 - B02, B04, B06, B08, B10, B12, D02, D04, D06, D08, D10, D12, F02, F04, F06, F08, F10, F12, H02, H04, H06, H08, H10, H12 J02, J04, ~~J06~~, J08, J10, J12, L02, L04, ~~L06~~, L08, L10, ~~L12~~.
 - Corners with lines through them are totally within the Federal Forest.
 - NOTE A LIST CORNERS in T20N;R15W ARE ALSO THE M LIST CORNERS IN T20N; R16W AND ARE NOT LISTED IN TOTALS FOR THIS TWP.

THIS TOWNSHIP SHOULD HAVE 155 CORNER RECORDS ON FILE PRIOR TO COMPLETION OF THE PERPETUAL MONUMENT MAINTENANCE PLAN

T20N-R16W

ALL corners monumented by the General Land Office between the years 1835-1839

- Section and One-Quarter Corners indexed as:
 - A01, A02, A03, A04, A05, A06, A07, A08, A09, A10, A11, A12, A13
 - B01, B03, B05, B07, B09, B11, B13
 - C01, C02, C03, C04, C05, C06, C07, C08, C09, C10, C11, C12, C13
 - D01, D03, D05, D07, D09, D11, D13
 - E01, E02, E03, E04, E05, E06, E07, E08, E09, E10, E11, E12, E13
 - F01, F03, F05, F07, F09, F11, F13
 - G01, G02, G03, G04, G05, G06, G07, G08, G09, G10, G11, G12, G13
 - H01, H03, H05, H07, H09, H11, H13
 - I01, I02, I03, I04, I05, I06, I07, I08, I09, I10, I11, I12, I13
 - J01, J03, J05, J07, J09, J11, J13
 - K01, K02, K03, K04, K05, K06, K07, K08, K09, K10, K11, K12, K13
 - L01, L03, L05, L07, L09, L11, L13
 - M01, M02, M03, M04, M05, M06, M07, M08, M09, M10, M11, M12, M13
- Meander Corners indexed as
 - 001, 002, 003, 004, 005
- Corners still to do: Center Quarter Section Corners indexed as:
 - B02, B04, B06, B08, B10, B12, D02, D04, D06, D08, D10, D12, F02, F04, F06, F08, F10, F12, H02, H04, H06, H08, H10, H12, J02, J04, J06, J08, J10, J12, L02, L04, L06, L08, L10, L12.
- NOTE A LIST CORNERS in T20N;R16W ARE ALSO THE M LIST CORNERS IN T20N; R17W AND ARE NOT LISTED IN TOTALS FOR THIS TWP.

THIS TOWNSHIP SHOULD HAVE 161 CORNER RECORDS ON FILE PRIOR TO COMPLETION OF THE PERPETUAL MONUMENT MAINTENANCE PLAN

T20N-R17W

ALL corners monumented by the General Land Office between the years 1840-1855

- Section and One-Quarter Corners indexed as:
 - A03, A04, A05, A06, A07, A08, A09, A10, ~~A11~~, ~~A12~~, A13
 - B01, B03, B05, B07, ~~B09~~, ~~B11~~, B13
 - C01, C02, C03, C04, C05, C06, C07, ~~C08~~, ~~C09~~, ~~C10~~, ~~C11~~, ~~C12~~, C13
 - D01, D03, D05, ~~D07~~, ~~D09~~, ~~D11~~, D13
 - E01, E02, E03, E04, E05, ~~E06~~, E07, E08, E09, E10, E11, E12, E13
 - F01, F03, F05, F07, F09, F11, F13
 - G01, G02, G03, G04, G05, G06, G07, G08, G09, G10, G11, G12, G13
 - H01, H03, H05, H07, H09, H11, H13
 - I01, I02, I03, I04, I05, I06, I07, I08, I09, I10, I11, I12, I13
 - J01, J03, J05, J07, J09, J11, J13
 - K01, K02, K03, K04, K05, K06, K07, K08, K09, K10, K11, K12, K13
 - L01, L03, L05, L07, L09, L11, L13
 - M01, M02, M03, M04, M05, M06, M07, M08, M09, M10, M11, M12, M13
- Meander Corners indexed as
 - 001, 002, 003, 004
 - Corners with lines through them are corners that are wholly within Federal or State lands and have no impact on private holdings
- Corners still to do; Center Quarter Corners indexed as:
 - B02, B04, B06, ~~B08~~, ~~B10~~, ~~B12~~, D02, D04, ~~D06~~, ~~D08~~, ~~D10~~, ~~D12~~, F02, F04, ~~F06~~, F08, F10, F12, H02, H04, H06, H08, H10, H12, J02, J04, J06, J08, J10, J12, L02, L04, L06, L08, L10, L12.
- - NOTE A LIST CORNERS in T20N;R17W ARE ALSO THE M LIST CORNERS IN T20N; R18W AND ARE NOT LISTED IN TOTALS FOR THIS TWP.

THIS TOWNSHIP SHOULD HAVE 137 CORNER RECORDS ON FILE PRIOR TO COMPLETION OF THE PERPETUAL MONUMENT MAINTENANCE PLAN

○ T20N-R18W

ALL corners monumented by the General Land Office between the years 1835-1839

○ Section and One-Quarter Corners indexed as:

- E13
- F13
- ~~G11~~, ~~G12~~, ~~G13~~
- ~~H11~~, H13
- ~~I09~~, ~~I10~~, ~~I11~~, ~~I12~~, I13
- ~~J09~~, ~~J11~~, J13
- K07, K08, ~~K09~~, ~~K10~~, ~~K11~~, ~~K12~~, K13
- L05, L07, ~~L09~~, ~~L11~~, L13
- M04, M05, M06, M07, M08, M09, ~~M10~~, ~~M11~~, ~~M12~~, M13

○ Meander Corners indexed as

- 001, 002, 003, 004, 005, 006, 007, 008, 009, 010, 011

- Corners still to do Center Quarter Corners indexed as:
L06, L08

- Corners with lines through them are corners that are wholly within Federal or State lands and have no impact on private holdings

THIS TOWNSHIP SHOULD HAVE 30 CORNER RECORDS ON FILE PRIOR TO COMPLETION OF THE PERPETUAL MONUMENT MAINTENANCE PLAN

APPENDIX BB

PERPETUAL MONUMENT MAINTENANCE PLAN

Upon entering the Maintenance status, corners will be revisited based on the recommendation of the County Representative. The County Representative shall recommend corners to be re-monumented and/or revisited taking into consideration the following factors:

- Available funding
- Preference for Corners with monuments that are known to have been disturbed
- Preference for Monuments located in populated areas of Mason County; these monuments maybe visited/ revisited more frequently than those in rural areas or area with less fractured parcel ownership.
- Preference for GLO Corners over non-GLO Corners accepted into the County Program.
- Preference for Corners that don't currently have a geodetic coordinate on file with the program
- Consideration given to the number of years since last visited; based on records of corners submitted to the County Remonumentation program AND/OR subsequent non-Remon Act 74 ('s) being filed at the Mason County Register of Deeds.

All corners that are revisited will be filed with geodetic coordinates.

For the purpose of the Perpetual Monument Maintenance Plan, and with reference to MCL 54.203 and MCL 54.203a, "as described" will be defined as follows:

- Monument [or Reference and/or Witness monument(s), where applicable], shall be considered as described if the material, size, and stamping information match that of the previous Remonumentation Record or subsequent non-remonumentation Land Corner record (Act 74) on file at the Mason County Register of Deeds.
- Witnesses (Bearing Trees, Carsonite posts, Witness Objects, Reference monuments, monument boxes, and/or other Accessories) shall be considered "as described" if the accessory exists in a condition similar to the time of its initial reference. This definition allows variations, within reason, for previously noted bearings, distances, and Tree diameters (allowing for growth). Reference nails, witness signs, Carsonite posts, monument boxes, or the like may be restored (if needed) in the previously recorded location without compromising the "as described" status. Unless a Bearing Tree was previously noted as dead, a tree that is still standing but is now dead is NOT considered "as described".

APPENDIX CC

PEER REVIEW GROUP

The Mason County Peer Group shall consist of a minimum Three (3) Land Surveyors licensed in the State of Michigan; including the County Representative whom serves as chair of the peer review group. All members of the peer group must hold a valid Professional Land Surveyors license issued by the State of Michigan, or be a retired Professional Land Surveyor with extensive experience. Peer Group Members will be selected to serve by the County Board, without an expiration date for their respective terms. Each Land Surveyor serving on the County Peer Group serves at the behest of the County Board, which may Add or Remove members as they see fit. If a member wishes to resign from the Peer Group, for any reason, they may submit their resignation (in writing) to the County Administrator to be brought before the County Board for approval.

No more than One (1) Surveyor from the same firm may serve on the peer group. If a firm has multiple Land Surveyors, the individual on the peer group may request one or more Land Surveyors to fill in their position as an alternate. Alternate status must be approved by the County Board. An alternate Professional Surveyor can attend a meeting for a member of the peer review group as a proxy vote once per calendar year.

Peer Group meetings will be scheduled as needed; generally, twice a year. Subject to change once the Perpetual Monument Maintenance plan is initiated.

Contract surveyors are not required to be a member of the peer review group. Professional Surveyors submitting contract corners will be notified of our meeting schedule, and are required to have themselves or a designee attend a meeting at which corners will be presented for approval. If a surveyor who prepared the LCRC cannot present the corner to the peer review group, the presentation can be delegated to the crew chief or other Professional Land Surveyor who actively participated in preparing the document(s). Surveyors who are members of the peer review group cannot vote on corners they present.

If the county representative is also the county administrator, that individual and that individual's organization shall not enter into any Remonumentation surveyor contract within the borders established by the county plan.

Walk-in corners from any Professional Land Surveyor in the State of Michigan are acceptable. No fee will be paid for walk-in corners, but enough material to complete the Remonumentation of the corner can be shared with the Professional Surveyor once the corner position is accepted. Professional Surveyors submitting walk-in corners will be notified of our meeting schedule, but need not attend.

A corner will be considered "Approved" by the Peer Group, if a majority of the Peer Group approves of the position.

APPENDIX DD GEODETIC COORDINATES

With respect to MCL 54.268 (2) (a)(iii), reporting of Geodetic Coordinates will be as follows:

- Geodetic coordinates reported will be in a degrees – minutes – seconds – decimal-seconds format for Latitude and Longitude.
- Accuracy of the coordinate will be within 1.0 feet.
- A database will be maintained by the County Representative.
- If a question of position arises, the distance from a witness will be weighted as more accurate than a geodetic coordinate.

In the event that the National Geodetic Survey, the State of Michigan, Mason County, or some other entity configures a low distortion projection or other system deemed to an improvement over the above noted system, the Peer Group may elect to change the format in which coordinates are reported.

APPENDIX EE
AGREEMENTS FOR ACTIVE GEODETIC CONTROL SITES

Mason County had an agreement with MDOT as it related to CORS site MILT location at the NOAA Gaging Station in Ludington, Michigan. All Hardware, Software, materials, rights, in any and all components related to this CORS station have been relinquished to the Michigan Department of Transportation. (If the County can locate the agreements with MDOT they will be included.)

APPENDIX FF
COUNTY REVISIONS TO THE REMONUMENTATION PLAN

Revisions to the existing Remonumentation Plan currently on file with the Office of Survey and Remonumentation may be amended subject to:

- A) Approval by the Board of County Commissioners.
- B) Approval by the Commission.

As it stands with the exception of the center quarter section corners and a few original GLO corners that have been located, we are near the completion of the remonumentation of the GLO corners. We are not in the perpetual monumentation phase although we are doing maintenance on selected corners.

Mason County 2024 Corners for Remonumentation

Craig: T17N;R16W Eden

A01; (Common with M01 T17N R17W & A13 T 18N R16W & M13 T18N
R17W) A02;A03;A04. (Common with T17N;R17W (M02;M03;M04)
B01;C01; D01; E01 (common with B13; C13; D13; E13 T18N R16W)
B03;C02;C03;C04;D03;E02;E03;E04;F01;F03;G01;G02;G03;G04.

T18N; 16W Custer G13;F13

24 Re-visits 24 Corners to be Re-monumented; 34 Corners to be entered in accel.

Noah T17N;15W Logan

C10;C11;C12;C13;D11;D13;E11;E12;E13

9 Re-visits 9 corners to be Re-monumented; 9 corners to be entered in accel.

Jim T17N;R15W Logan

E01;E02;E03;E04;F01;F03;G04;H05;H07;

T18N;R15W Branch

E13;F13;

11 Re-visits: 11 corners to be Re-monumented 11 corners to be entered into accel.

Knizacky, Fabian

From: O'Connor, John
Sent: Friday, January 12, 2024 9:59 AM
To: Knizacky, Fabian
Cc: Szczypka, Kaitlyn
Subject: BPDA Agenda Request
Attachments: 2024 Reith-Riley Contract RWY 8-26 Rehab with signature page.pdf; J. Ranck Quote with product sheets.pdf; Korthase Quote with product sheets.pdf

Good morning Fabian,

Below are the items I would like to take to the next BPDA Committee Meeting for consideration:

EAA Young Eagles Pancake Fly-in Breakfast

- The Mason County Pilots Association (MCPA-EAA Chapter 772) is proposing to do their annual Young Eagles flight event on Saturday, June 29th.
 - Note this is a different date than the typical first Saturday after the 4th of July.
 - The flight operation will be the same as previous years.
- MCPA is proposing to partner with Wings of Mercy to host a pancake breakfast.
 - Proceeds to benefit Wings of Mercy and EAA Chapter 772. Wings of Mercy is a non-profit organization that provides flights for medical treatment to those that might not otherwise be able to travel for care.
 - Wings of Mercy and EAA Chapter 772 will have insurance policies covering both elements of the event as well as a temporary food permit.

Runway 8/26 Rehabilitation and RWY 8 PAPI Replacement Contract

- Attached you will find the Reith-Riley contract for the Runway 8/26 Rehabilitation and RWY 8 PAPI replacement project scheduled for this spring. Prein & Newhof has two hard copy books of the contract that he will get to LDM before the next Board Meeting for signature if approved.
 - Prein & Newhof has advised that all Reith-Riley bonds and insurance are in order and have been received.

Airport Wind Cone Replacement

- The Airport has two lighted wind cones that are no longer serviceable and are in need of replacement. The proposed replacements will be LED rather than the previous halogen lighting (15-20% of halogen power consumption and up to 100,000 hour lamp life).
- I am requesting to fund this 100% local project out of the Airport Improvement Fund totaling \$21,600.
- Two quotes are attached.

Martinaire MRA Deicing Update

Thank you for the consideration and let me know if there are any questions.

John L. O'Connor, C.M.
Airport Manager
Mason County Airport (KLDM)
Ludington, MI
231-843-2049 (Office)
231-690-2029 (Mobile)
joconnor@masoncounty.net

This e-mail system is the property of the County of Mason. All data and other electronic messages within this system are the property of the County of Mason. E-mail messages in this system may be considered County Records and therefore may be subject to Freedom of Information Act requests and other legal disclosure.



J. RANCK ELECTRIC, INC.

Mt. Pleasant, Michigan
1993 Gover Parkway
Mt. Pleasant, MI 48858
phone 800-792-3822
fax 989-775-8830

January 11, 2024

Mason County Airport
5300 US-10
Ludington, MI 49431

Attn: John O'Connor

Re: Wind Cone Replacement

Mr. O'Conner

We are pleased to submit a quotation to provide the necessary labor, equipment and materials to replace the existing wind cones. Please see the following pricing:

- Primary Windcone **\$15,575.00**
 - Remove existing wind cone.
 - Install new wind cone on existing foundation.
- Supplemental Windcone **\$11,000.00**
 - Remove existing wind cone.
 - Install new wind cone on existing foundation.

Qualifications:

- a) Price is based on working normal working hours (7AM-5PM).
- b) Work based on using existing foundations and cabling.
- c) Bonds, permits, traffic control not included.

We appreciate the opportunity to quote this work to you. If you have any additional questions, please feel free to contact me at 989-775-7393.

Sincerely,

J. RANCK ELECTRIC, INC.



Jeff Davis

Clio, Michigan
5122 West Vienna Rd.
Clio, MI 48420

Sault Ste. Marie, Michigan
3137 South Baker Side Rd.
Sault Ste. Marie, MI 49783





Hali-Brite® L-806 and L-806(L) Wind Cones

Features

- Perfect for Vertiports, Heliports or Airports
- Pre-assembled bearings, one piece welded Aluminum basket, and center hinged pole for easy installation
- Mounting options include: Roof, Wall, Floor Flange, 2" NPT Conduit or L-867 Base Plate
- Certified to FAA AC 150/5345-27F by ETL
- 50,000 to 100,000 hour LED lamp life, virtually maintenance free. 4 year warranty
- 80-90% less power consumption than halogen lamps
- NVG visibility
- **Solar power option available**-eliminate long underground wire and conduit installations! Wind cone certified to FAA AC 150/5345-27F by ETL
- Marine Treated Option (recommended for installations within 100miles of saltwater) available for increased useful life in corrosive environments
- Size 1 (18" diameter x 8' long) wind sock (berry compliant) treated for rot, mildew, and water repellent
- Powder coat painted international orange

ETL Certified to FAA AC 150/5345-27F
Wind Cone/ Wind Direction Indicator for
• VERTIPORT • HELIPORT • AIRPORT

Applications:

Provides visual indication of wind direction and velocity for pilots at Vertiports, Heliports, smaller airfields, and as supplemental wind indicators near runway touchdown areas on large airfields.



Internal Light Kit



External Light Kit



Optional Solar Power
Supply SPS-100

Sales and Technical Support:

1.800.553.6269
Sales@halibrite.com



Hali-Brite, Inc.
1119 Madison Street
Brainerd, MN 56401



www.halibrite.com
Ph: 218.454.0956
Fax: 218.454.0972



Hali-Brite® L-806 and L-806(L) Wind Cones

Wind Cone Selection Chart

Catalog Number	See Notes	FAA Size	FAA Style	Power Source	Fixture VA	Fixture Watts	Weight (lbs)	Replacement Lamp
L806-S1-IN-120-ON-5		1	I-B Internal	108-132 VAC	32	19	59	9200-0038
L806-S1-IN-12-ON-5	3	1	I-B Internal	11.5-13 VDC	6	6	57	9200-0041
L806-S1-IN-66A-ON-5	2	1	I-B Internal	2.8-6.6 AMP	72	65	57	9200-0039
L806-S1-IN-230-ON-5	1	1	I-B Internal	198-265 VAC	40	21	59	9200-0045
L806-S1-EX-120-ON-5		1	I-A External	108-132 VAC	15	14	58	9200-0032
L806-S1-EX-12-ON-5	3	1	I-A External	11.5-13 VDC	6	6	57	9200-0033
L806-S1-EX-66A-ON-5	2	1	I-A External	2.8-6.6 AMP	58	52	57	9200-0034
L806-S1-EX-230-ON-5	1	1	I-A External	207-253 VAC	15	14	58	9200-0044
L806-S1-UN-NON-ON-N		1	II Unlighted	none	0	0	45	none

Notes:

1. Model is not ETL Certified to FAA AC 150/5345-27F
2. Requires 100 watt L-830 transformer, sold separately
3. Designed for use with Hali-Brite Solar Power Supply or 12VDC Driver, sold separately

Options:

L806 Marine Treated "Marine Treated" for corrosive environments within 100mi of saltwater. Includes: marine treat powder coat, stainless steel bearings and hardware

L806 Anchor Cage Welded anchor cage for embedding in concrete

L806 SS Anchor Cage Welded stainless steel anchor cage for embedding in concrete

L806-FM L806 flange/floor mount

L806-WM L806 wall mount kit

L806-RM L806 roof mount kit

SPS-100-2 Solar Power Supply for 12v models

L806-Hinge Plate Base hinge plate for L806

7400-0000-1 Spare Wind Sock, 18" diameter, 8' length

1800-0025 Spare Frangible Coupling

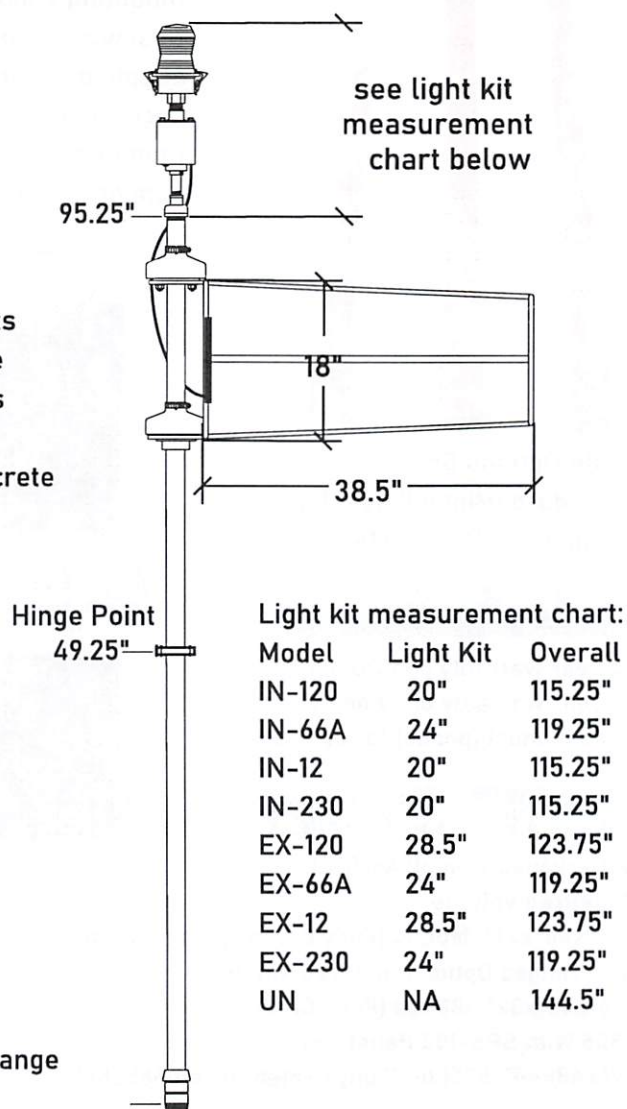
1800-0026 RIGID Coupling (NOT FOR USE IN RUNWAY SERVICE AREAS)

L806-Aluminum L806 with aluminum pole vs steel

L806-No Hinge L806 pole WITHOUT center hinge (Ships on 8' pallet vs 4')

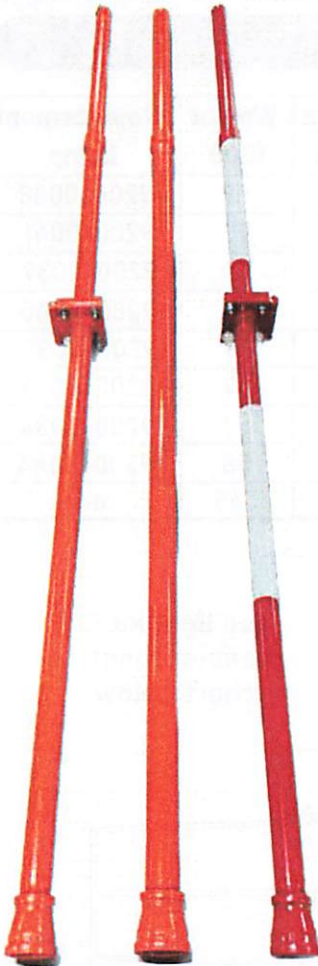
L806-RW Red and White powder coat and Sock VS orange

Replacement lamp See chart above





Hali-Brite® L-806 and L-806(L) Wind Cones



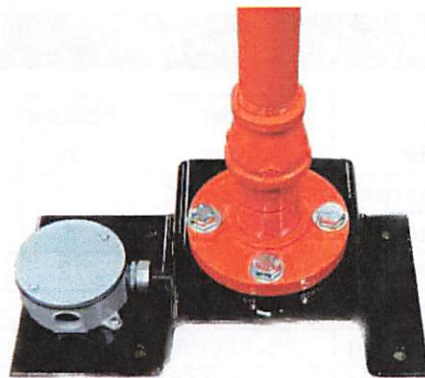
Pole Options Shown:
Standard (Hinged), No Hinge
Option and Red/White

Warranty Information

4 year warranty on LED lamps
2 year warranty on Wind Cone
See manual (page5) for details

Shipping Information

Unpackaged Weight: 45-59Lbs
Palletized Volume:
48"x48"x27" 160Lbs (Fully Crated Option 226Lbs)
Non-Hinged Option Palletized Volume:
96"x48"x32" 180Lbs (Fully Crated Option 300Lbs)
L806 With SPS-100 Palletized Volume:
96"x48"x40" 525Lbs (Fully Crated Option 685Lbs)

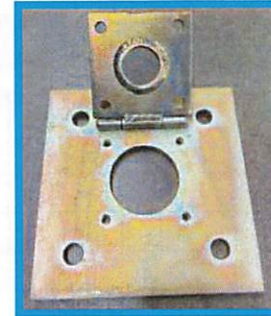
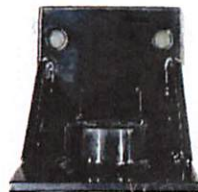


L806-RM

Roof/Wall Mount: Used for
mounting Windcone directly
to a wall or roof. Fasteners
supplied by others. Must be
secured directly to framing
member capable of
supporting the windcone



L806-WM



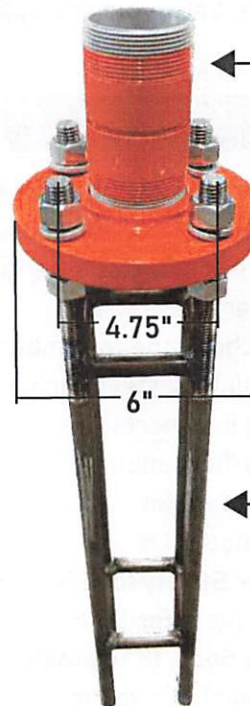
L806-Hinge Plate

Custom built to
existing
foundation bolt
pattern



7400-0000-1

Note; One FAA
Size 1 Windsock
included with
every L806



1800-0025 Frangible

Note; One frangible coupling
included with every L806 order

L806-FM

Floor Flange Mount: Used for
mounting Wind Cone directly
to foundation. Anchors
supplied by others or see
optional L806-Anchor Cage

L806-Anchor Cage

L-806 Anchor Cage, Welded
square assembly. Used for
embedding in foundation.
Designed to fit L806-FM

Sales and Technical Support:

1.800.553.6269

Sales@halibrite.com

📍 Hali-Brite, Inc.
1119 Madison Street
Brainerd, MN 56401

🌐 www.halibrite.com
☎ Ph: 218.454.0956
📠 Fax: 218.454.0972



Hali-Brite® L-807 and L-807(L) Wind Cones

Features

- Primary Wind Cone for all Airport, Heliport and Vertiports
- Certified to FAA AC 150/5345-27F by ETL
- ICAO Compliant to Annex 14, Vol. 1, para. 5.1.1 (Size 2)
- Available in FAA Size1 (18"x8' sock) or FAA Size2 (36"x12' Sock)
- Designed to operate at any ambient temperature between -67°F (-55°C) and 131°F (+55°C)
- Designed to withstand winds up to 75 knots (140 km/hr or 86 mph).
- Windsack moves freely about the vertical shaft it is attached to when subjected to wind of 3 knots (5.6 km/hr or 3.5 mph) or more and indicates the true wind direction within ± 5 degrees.
- Windsack extends fully when subjected to wind of 15 knots (28.7 km/hr or 17.8 mph)
- Anchor cage for concrete footing included
- Pre-assembled bearings, Welded Aluminum basket, and 3 part pole for easy installation
- Easy to operate winch for lowering basket
- 50,000 to 100,000 hour LED lamp life
- 4 year warranty on LED Lamps
- 80-90% less power consumption than halogen lamps
- NVG visibility
- **Solar power option available**—eliminate long underground wire and conduit installations!
- Marine Treated Option (recommended for installations within 100miles of saltwater) available for increased useful life in corrosive environments
- Wind Sock included, (berry compliant) treated for rot, mildew, and water repellent

Wind Cone/ Wind Direction Indicator provides visual indication of wind direction and velocity for pilots
Certified to FAA AC 150/5345-27F by ETL. ICAO Compliant to Annex 14, Vol. 1, para. 5.1.1 (Size 2)

Hali-Brite® L807 Size 2 shown with Hali-Brite® Segmented Circle



Hali-Brite® L-807 and L-807(L) Wind Cones

Wind Cone Selection Chart

Catalog Number	See Notes	FAA Size	FAA Style	Power Source	Fixture VA	Fixture Watts	Weight (lbs)	Replacement Lamp
L807-S1-IN-120-ON-5		1	I-B Internal	108-132 VAC	32	19	200	9200-0038
L807-S1-IN-12-ON-5	4	1	I-B Internal	11.5-13 VDC	6	6	197	9200-0041
L807-S1-IN-66A-ON-5	2	1	I-B Internal	2.8-6.6 AMP	72	65	198	9200-0039
L807-S1-IN-230-ON-5	1	1	I-B Internal	198-265 VAC	40	21	200	9200-0045
L807-S1-EX-120-ON-5		1	I-A External	108-132 VAC	15	14	198	9200-0032
L807-S1-EX-12-ON-5	4	1	I-A External	11.5-13 VDC	6	6	197	9200-0033
L807-S1-EX-66A-ON-5	2	1	I-A External	2.8-6.6 AMP	58	52	197	9200-0034
L807-S1-EX-230-ON-5	1	1	I-A External	207-253 VAC	15	14	198	9200-0044
L807-S1-UN-NON-ON-N		1	II Unlighted	none	0	0	187	none
L807-S2-IN-120-ON-5		2	I-B Internal	108-132 VAC	60	32	212	9200-0040
L807-S2-IN-12-ON-5	4	2	I-B Internal	11.5-13 VDC	10	10	210	9200-0042
L807-S2-IN-66A-ON-3	3	2	I-B Internal	2.8-6.6 AMP	95	88	210	9200-0031
L807-S2-IN-230-ON-5	1	2	I-B Internal	198-265 VAC	76	36	212	9200-0046
L807-S2-EX-120-ON-5		2	I-A External	108-132 VAC	22	21	210	9200-0035
L807-S2-EX-12-ON-5	4	2	I-A External	11.5-13 VDC	10	10	210	9200-0036
L807-S2-EX-66A-ON-5	2	2	I-A External	2.8-6.6 AMP	58	52	209	9200-0037
L807-S2-EX-230-ON-5	1	2	I-A External	207-253 VAC	22	21	210	9200-0043
L807-S2-UN-NON-ON-N		2	II Unlighted	none	0	0	187	none

Notes:

1. Model is not ETL Certified to FAA AC 150/5345-27F
2. Requires 100 watt L-830 transformer, sold separately
3. Requires 200 watt L-830 transformer, sold separately
4. Designed for use with Hali-Brite Solar Power Supply or 12VDC Driver, sold separately

Options:

- L807 Marine Treated** "Marine Treated" for corrosive environments within 100mi of saltwater. Includes: marine treat powder coat, stainless steel winch, cable, bearings and hardware
- SPS-100-2** Solar Power Supply for S1 12v models
- SPS-200-2** Solar Power Supply for S2 12v models
- 7400-0000-1** FAA Size 1 Spare Wind Sock, 18" x 8'
- 7400-0002** FAA Size 2 Spare Wind Sock, 36" x 12'
- L807-No Break** L807 pole WITHOUT break in top section of pole (ships on 10' pallet vs 6')
- Replacement lamp** See chart above



Optional Spare Wind Sock



Optional Solar Power Supply



Hali-Brite® L-807 and L-807(L) Wind Cones

External LED



Internal LED

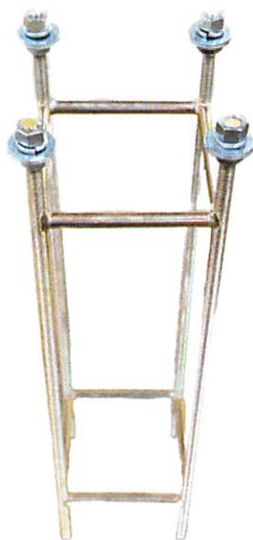


Warranty Information

4 Year Warranty on LED
Lamps, 2 Year Warranty
on components
See Manual, Page 5 for
details

Shipping Information

Unpackaged Weight: See Chart
Palletized Volume: 72"x48"x42"
Palletized Weight: 350lbs
(Fully Crated option 500lbs)
L807-No Break Option;
Palletized Volume 120"x48"x42"
500Lbs (fully crated 700lbs)



**Anchor Cage,
Included**

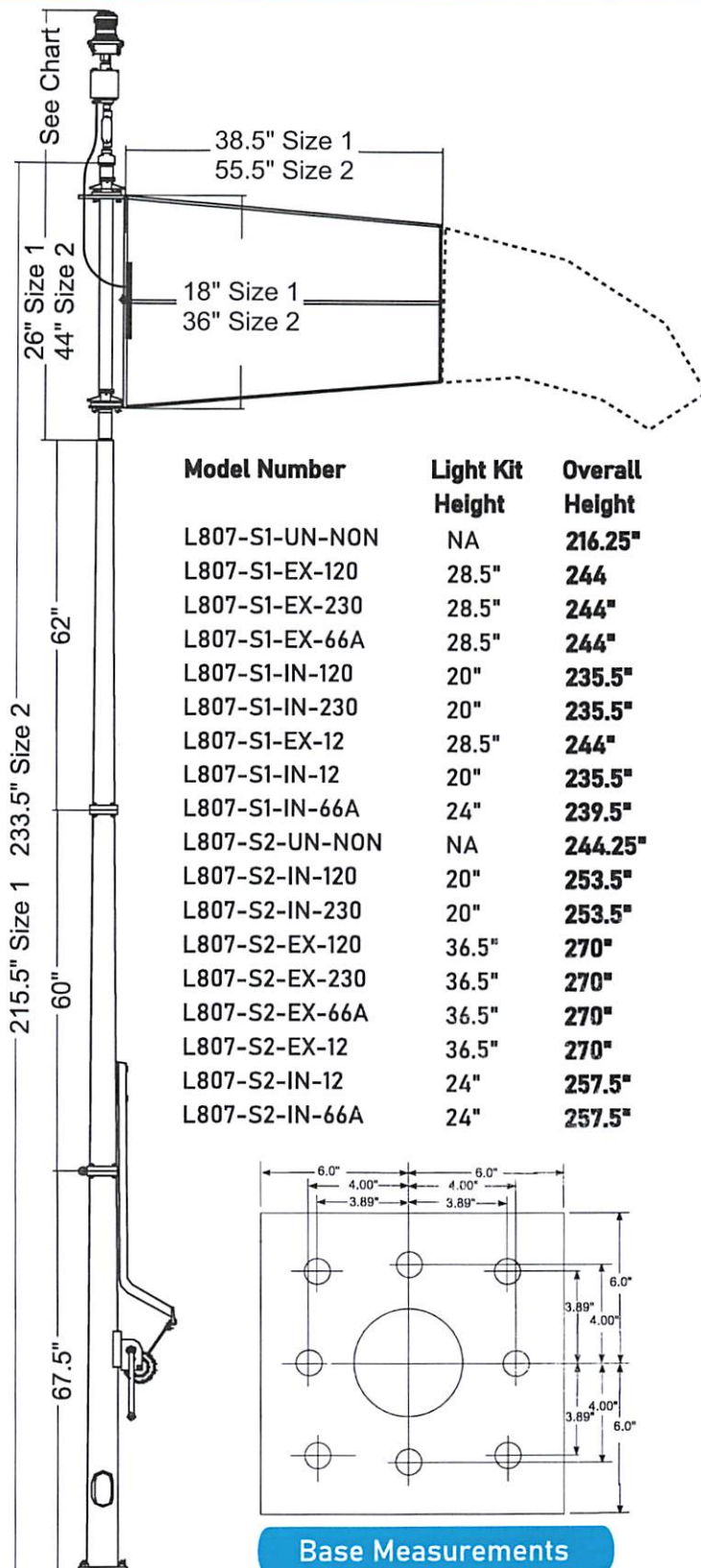
Sales and Technical Support:

1.800.553.6269

Sales@halibrite.com

Hali-Brite, Inc.
1119 Madison Street
Brainerd, MN 56401

www.halibrite.com
Ph: 218.454.0956
Fax: 218.454.0972



From: Tim Korthase <tkorthase@korthaseandsons.com>
Sent: Friday, December 15, 2023 4:42 PM
To: O'Connor, John
Subject: wind cone

Follow Up Flag: Follow up
Flag Status: Flagged

CAUTION: This email originated outside of Mason County's networks. Do not click links, reply or open attachments unless you have verified its authenticity.

Hello John

The primary wind cone replacement new is \$12,500.00

The secondary wind cone would be \$9100.00.

This includes removal and installation on existing base. Adding can to house transformer on secondary ones would additional if you want.

If you want on formal Korthase letter head proposal form let me know.

Thanks

Tim

Tim Korthase

E: tkorthase@korthaseandsons.com

T: (231)893-1133

C: (231)457-7429



Virus-free. www.avg.com

L-806

Wind Cone



COMPLIANCES

FAA AC 150/5345-27 (current edition)

ETL Certified



PRODUCT APPLICATION

The L-806 Wind Cone provides visual indication of wind direction and velocity at a location on an airfield. L-806 wind cones are used on smaller airfields, heliports and as supplemental wind indicators near runway touchdown areas on large airfields.

FEATURES

- Available externally lighted, internally lighted, or unlighted.
- LED or halogen lamps.
- The LED models feature:
 - 50,000 to 100,000 hour lamp life, virtually maintenance free.
 - Multiple lamp circuits for improved reliability.
 - 80-90% less power consumption than halogen lamps.
 - A long-life LED obstruction light.
 - Integral power adapter on series-circuit models.
- Incandescent L-810 obstruction light included on halogen-lighted models.
- Size 1 (18" diameter x 8' long) wind sock.
- 1.9" diameter steel pole with frangible coupling at base.
- One piece welded aluminum basket with pre-installed bearings.
- Raincaps protect the bearings from weather.
- May be mounted directly to an L-867 light base, 2-inch NPT baseplate (sold separately).
- The nylon sock is treated for rot, mildew, and water repellency.
- Powder coat painted international orange.

APPROACH LIGHTS & NAVIGATIONAL AIDS - 3.10



External LED Light



Internal Halogen Light



External Halogen Light



Internal LED Light

ORDERING INFORMATION

Part Number*	See Note	FAA Size	FFA Style	Power Source	Lamp Type	Total VA	Weight (lb.)	Replacement Lamp
L-806-S1-UN-NON-ON-N	N/A	1	II Unlighted	none	none	0	45	none
L-806-S1-EX-120-ON-5	N/A	1	I-A External	120VAC	LED	15	58	9200-0032
L-806-S1-EX-66A-ON-5	4	1	I-A External	6.6AMP	LED	50	57	9200-0034
L-806-S1-IN-120-ON-5	N/A	1	I-B Internal	120VAC	LED	30	59	9200-0038
L-806-S1-EX-120-ON-N	N/A	1	I-A External	120VAC	Halogen	191	55	3400-0122
L-806-S1-IN-120-ON-N	2	1	I-B Internal	120VAC	Halogen	316	57	3400-0100Regent
L-806-S1-EX-12-ON-5	N/A	1	I-A External	12VDC	LED	8	57	9200-0033
L-806-S1-IN-66A-ON-5	3	1	I-B Internal	6.6AMP	LED	137	60	9200-0039

Notes:

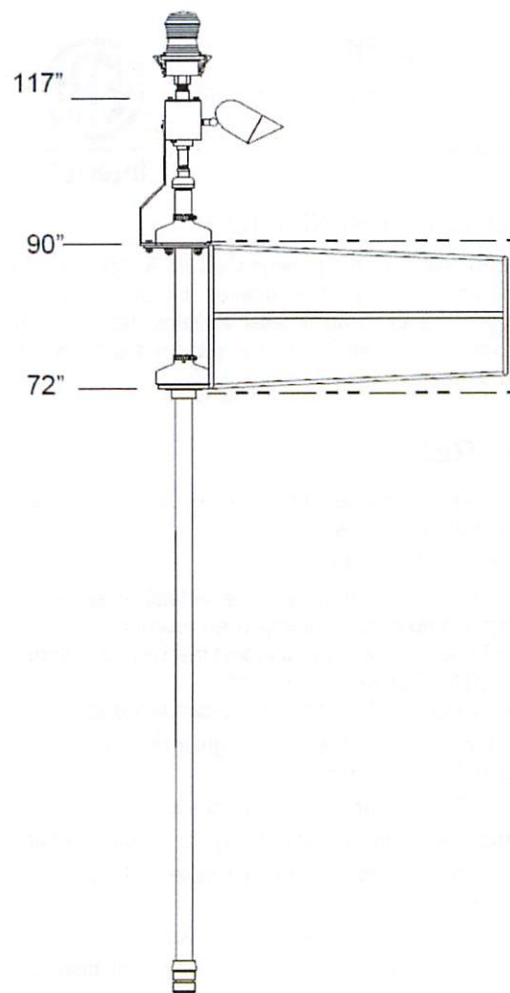
1. Power consumption specifications include the L-810 obstruction light
2. This FAA Style cannot be ETL certified
3. Requires 200W L-830 transformer, sold separately
4. Requires 100W L-830 transformer, sold separately

*Manufactured by Hali-Brite Inc.

RENEWAL PARTS

Description	Part Number
Wind Sock, 18 inches diameter, 8 foot long, orange	7400-0000-1
Frangible Coupling	1800-0025
Lamp, 120V Incandescent Obstruction Light	3400-116TS120

EXPLODED VIEW



6830 NW 16th Terrace • Ft. Lauderdale, FL 33309 USA
Phone: 1.937.652.3500 • E-mail: AFLsales@HugheyAndPhillips.com • www.HugheyAndPhillips.com

Actual product specifications may have changed since the printing of this brochure.
Brochure specifications are not binding. Confirm current specifications at time of order.

L-806 Wind Cone
081319

L-807 Wind Cone

APPROACH LIGHTS & NAVIGATIONAL AIDS - 3.12



COMPLIANCES

FAA AC 150/5345-27 (current edition)
ICAO: Annex 14, Vol. 1, para. 5.1.1
(Size 2 only)

ETL Certified



PRODUCT APPLICATION

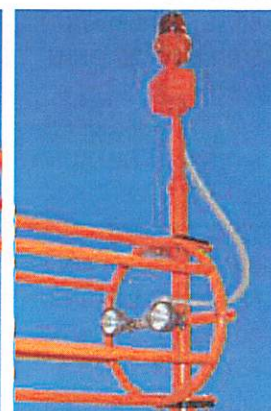
The L-807 Wind Cone provides visual indication of wind direction and velocity at a location on an airfield. FAA Size 2 wind cones are used at the central location on the airfield. FAA Size 1 wind cones are used on smaller airfields and heliports.

FEATURES

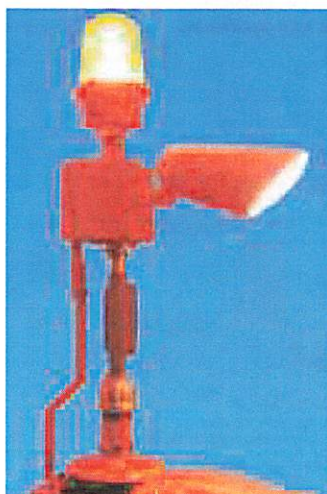
- Available externally lighted, internally lighted, or unlighted.
- LED or halogen lamps.
- All LED models feature:
 - 50,000 to 100,000 hour lamp life, virtually maintenance free.
 - Multiple lamp circuits for improved reliability.
 - 80-90% less power consumption than halogen lamps.
 - A long-life LED obstruction light.
 - Integral power-adaptor on series-circuit models.
- An incandescent L-810 obstruction light is included on halogen lighted models.
- Size 1 (18" x 8' long) or Size 2 (36" x 12' long) wind socks.
- The pole is center-hinged, with 4" diameter steel on the bottom, and 3" diameter steel on the top.
- A center-mounted braked winch allows 1-person maintenance.



External LED Light



Internal Halogen Light



External Halogen Light



Internal LED Light

- The four anchor bolts are a one-piece welded assembly, ready to drop in the ground.
- The aluminum basket is welded, one piece, with pre-installed bearings.
- Raincaps protect the bearings from weather.
- The nylon sock is treated for rot, mildew and water repellency.
- Powder coat painted international orange.

ORDERING INFORMATION

Part Number*	See Note	FAA Size	FFA Style	Power Source	Lamp Type	Total VA	Weight (lb.)	Replacement Lamp
L-807-S1-UN-NON-ON-N	N/A	1	II Unlighted	none	none	0	187	none
L-807-S1-EX-120-ON-5	N/A	1	I-A External	120VAC	LED	15	198	9200-0032
L-807-S1-EX-66A-ON-5	4	1	I-A External	6.6AMP	LED	50	197	9200-0034
L-807-S1-IN-120-ON-5	N/A	1	I-B Internal	120VAC	LED	30	200	9200-0038
L-807-S1-EX-120-ON-N	N/A	1	I-A External	120VAC	Halogen	191	196	3400-0122
L-807-S1-IN-120-ON-N	2	1	I-B Internal	120VAC	Halogen	316	198	3400-0100Regent
L-807-S1-EX-12-ON-5	N/A	1	I-A External	12VDC	LED	8	197	9200-0033
L-807-S1-IN-66A-ON-5	3	1	I-B Internal	6.6AMP	LED	137	198	9200-0039
L-807-S2-UN-NON-ON-N	N/A	2	II Unlighted	none	none	0	199	none
L-807-S2-IN-120-ON-5	N/A	2	I-B Internal	120VAC	LED	54	217	9200-0040
L-807-S2-EX-120-ON-5	N/A	2	I-A External	120VAC	LED	22	211	9200-0035
L-807-S2-EX-66A-ON-5	4	2	I-A External	6.6AMP	LED	54	210	9200-0037
L-807-S2-EX-120-ON-N	N/A	2	I-A External	120VAC	Halogen	191	208	3400-0122
L-807-S2-IN-120-ON-N	N/A	2	I-B Internal	120VAC	Halogen	416	213	3400-0100Regent
L-807-S2-EX-12-ON-5	N/A	2	I-A External	12VDC	LED	12	210	9200-0036
L-807-S2-IN-66A-ON-3	3	2	I-B Internal	6.6AMP	LED	157	218	9200-0031

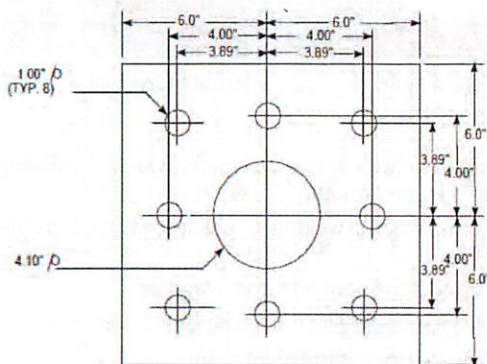
Notes:

1. Power consumption specifications include the L-810 obstruction light
2. This FAA Style cannot be ETL certified
3. Requires 200W L-830 transformer, sold separately
4. Requires 100W L-830 transformer, sold separately

*Manufactured by Hali-Brite Inc.

RENEWAL PARTS

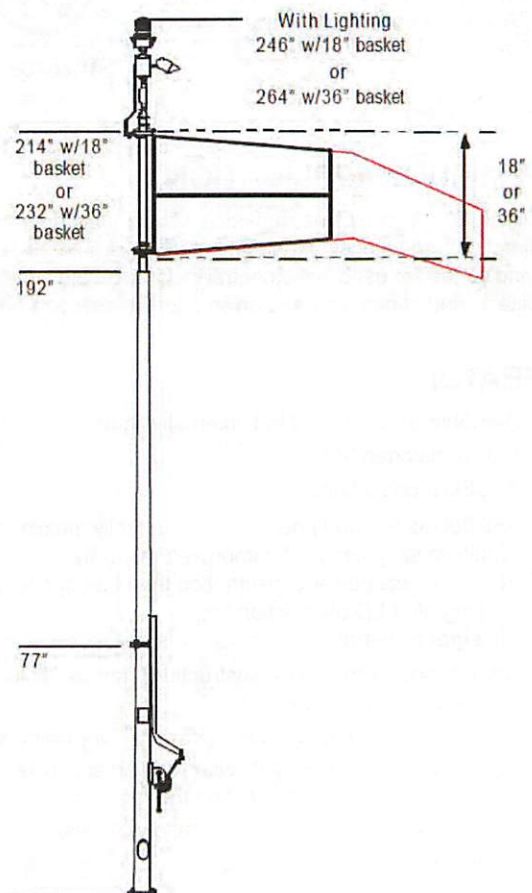
Description	Part Number
Wind Sock, Size 1 (18 inches diameter, 8 feet long, orange)	7400-0000-1
Wind Sock, Size 2 (36 inches diameter, 12 feet long, orange)	7400-0002



Base Layout

NOTE:
Only 4 Anchor
Bolts Required

EXPLODED VIEW



6830 NW 16th Terrace • Ft. Lauderdale, FL 33309 USA
Phone: 1.937.652.3500 • E-mail: AFLsales@HugheyAndPhillips.com • www.HugheyAndPhillips.com

Actual product specifications may have changed since the printing of this brochure.
Brochure specifications are not binding. Confirm current specifications at time of order.

L-807 Wind Cone
081319